

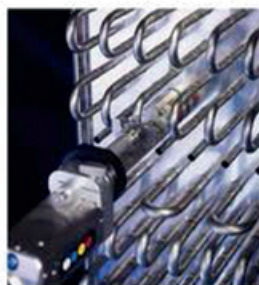
introducing a hygienic design that opens up the potential for new applications in sensitive environments. The completely redesigned Scara robot arms now have a modular configuration, and for the first time, feature the company's proprietary hollow-shaft drive that is already available on the six-axis models. This drive technology is the key to the performance gains of the four-axis TS2 and to a unique cleanroom design in which external cabling is eliminated. The new robots are characterized by their compact, enclosed design with internal media and supply lines. There is no external bundling of cables and thus no irregular contours, sources of mechanical failure or avoidable particle emissions. The machine's design includes completely sealed housing, optional quill protection with a cover affixed with special screws and concealed connections under the robot pedestal with dead spaces systematically excluded. The new product range has four models. Hall 1.1, Stand B47 — *Stäubli Tec-Systems GmbH, Bayreuth, Germany*  
**www.staubli.com**



Stäubli Tec-Systems

### Orbital weld heads for thin stainless-steel pipes

HX Series orbital weld heads enable users to join pipe elbows to small stainless-steel pipes (for example in heat exchanger construction). The product line has now been expanded to include the HX 12P model (photo), which is specially designed for very compact fin heat exchangers with pipe diameters ranging from 9.5 to 13.3 mm. Using an automated welding technology, pre-mounted pipe elbows, even those in tight pipe bundles, can be welded reliably and quickly (in under 30 s per pipe). The HX 12P features a straight design, which enables easy turning of the head at the heat exchanger. The entire unit can be suspended from a balancer to take the strain off the operator. In addition to the HX 12P, the HX Series also includes the HX 16P for pipe diameters from 15.0 to 16.8 mm and the HX 22P for 18.0 to 22.0 mm. Hall 9.2, Stand D10 — *Orbitalum Tools GmbH, Singen, Germany*  
**www.orbitalum.com**



Orbitalum Tools

### New technologies for bag filling and testing

The fillpac FFS (photo, p. 74) is a highly efficient form-fill seal system that is designed for use in the chemical and petrochemical industries. The machine forms bags from a prefabricated tubular polyethylene (PE) film and fills them with users' products. The product range also includes a new bag tester device that is easy to transport and enables users to precisely determine the

## CR Clean Air

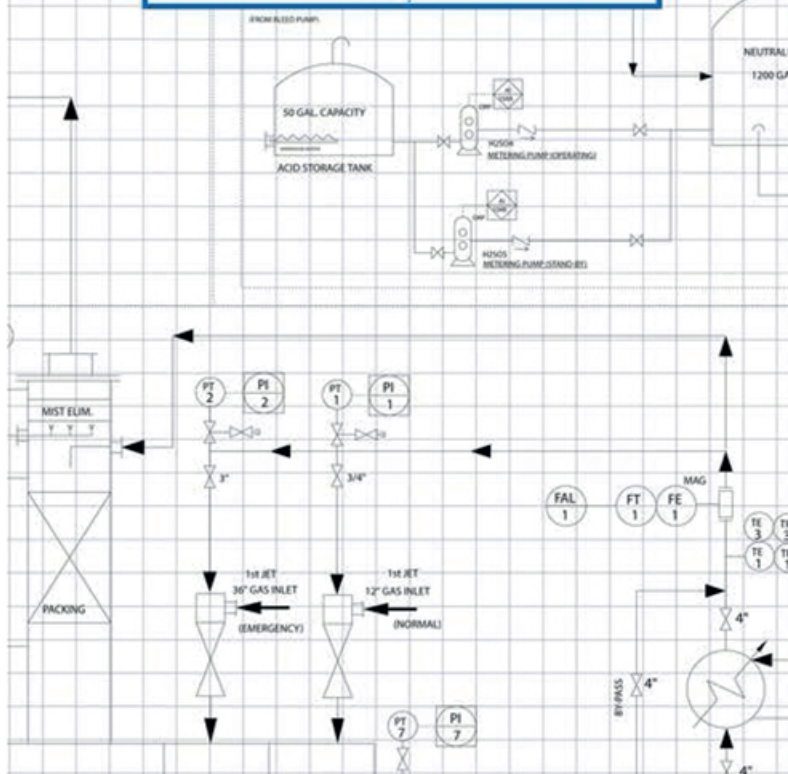


LEADERS IN CLEAN AIR TECHNOLOGY

When it has to work.  
*The first time...  
 every time.*

From Arsenic to Zirconium Tetrachloride...  
 we scrub gasses others won't touch!

INDUSTRIES	POLLUTANTS
Aerospace	HCL / CL2
Agriculture	HF / HBr
Chemical	SO2
Cement	NH3
Fertilizer	NOx
Fibers	H2S
Food	ETO / PO
HVAC	SiO2
Medical	SiCL3
Petrochemical	Mists
Pharmaceutical	Dust
Pulp & Paper	Particulate
Semiconductor	Phosgene
Textile	VOC's



Call us: (973) 947-8787

Email us: [info@crleanair.com](mailto:info@crleanair.com)

Address: Six Campus Drive  
 Parsippany, NJ 07054



Visit us at: [www.CRCleanAir.com](http://www.CRCleanAir.com)

For details visit [adlinks.chemengonline.com/70306-12](http://adlinks.chemengonline.com/70306-12)